

# How Farmers are Reducing Their Carbon Footprint



By Susan Varlamoff  
University of Georgia  
College of Agricultural  
and Environmental  
Sciences



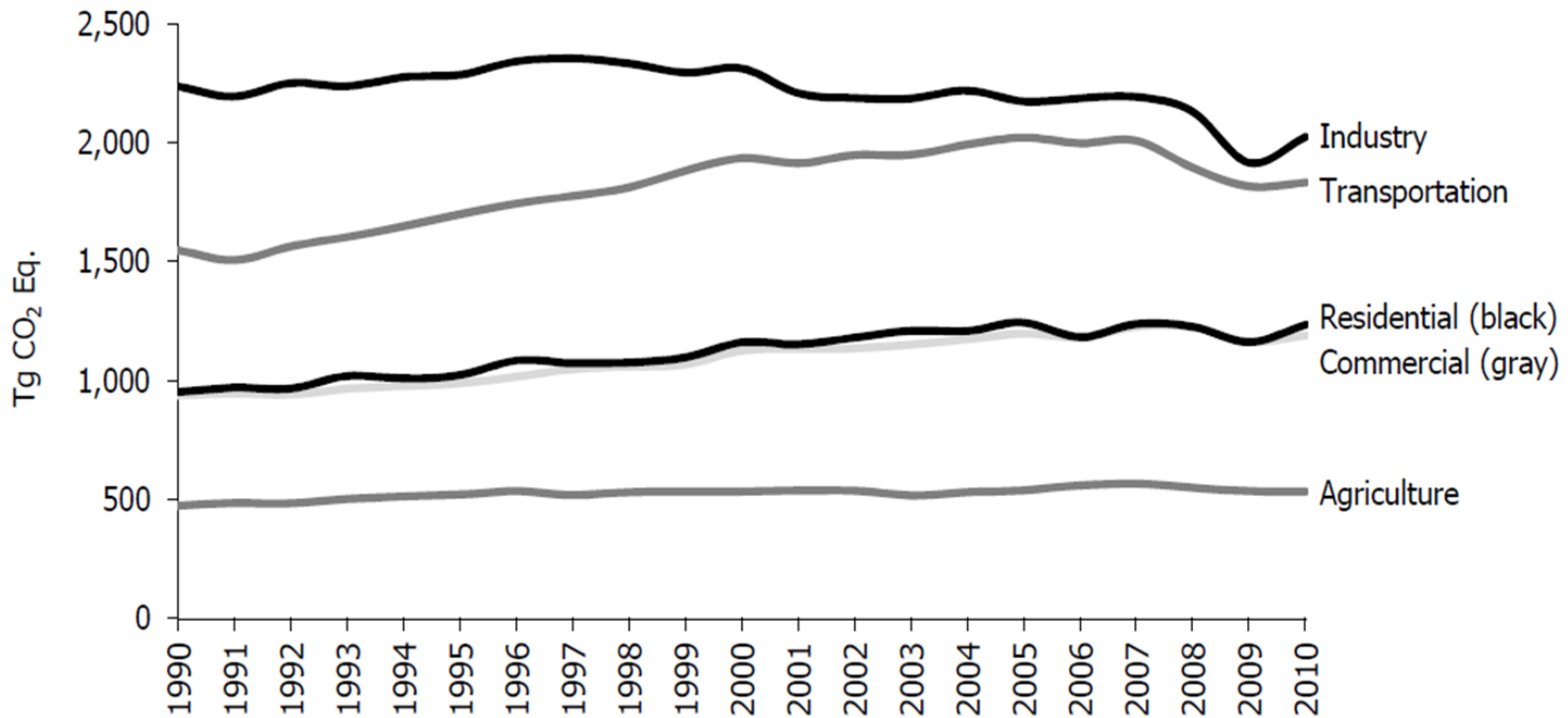
THE UNIVERSITY OF GEORGIA

COLLEGE OF AGRICULTURAL & ENVIRONMENTAL SCIENCES

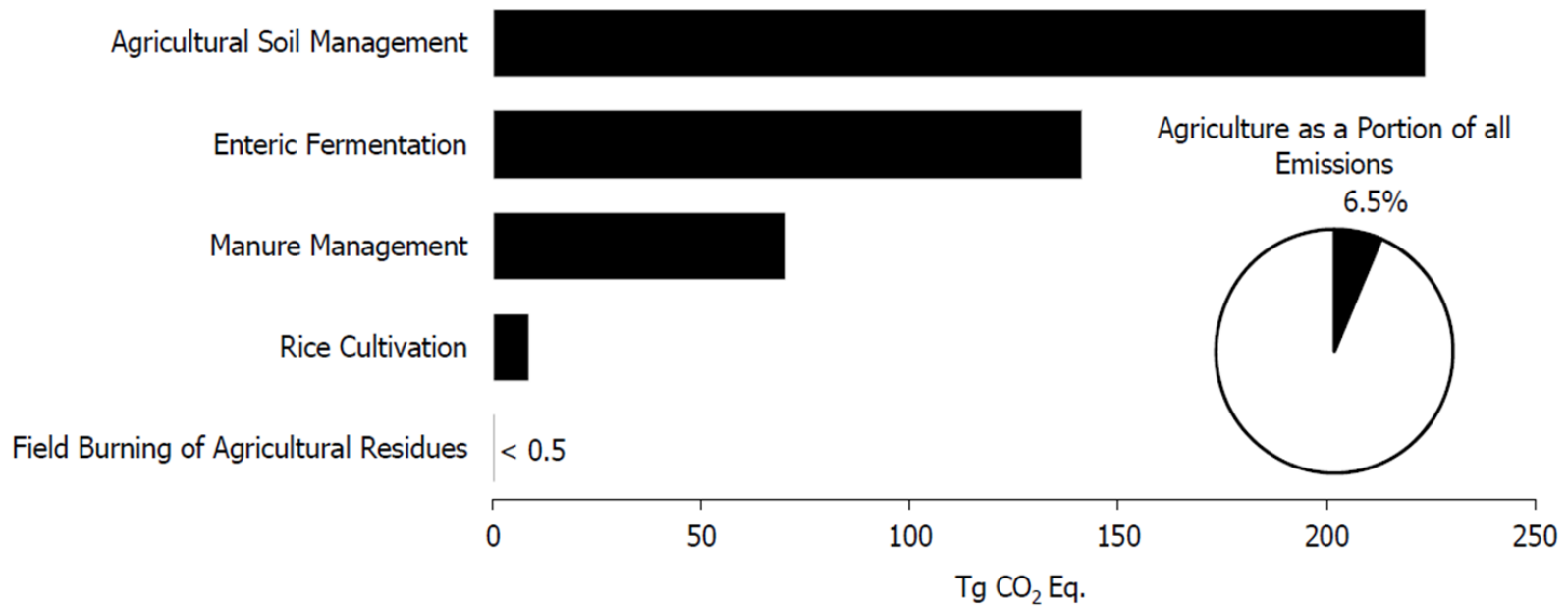
# What is a carbon footprint?

- Total GHG emissions for a given person, place, event, or product
- Created using a Life Cycle Analysis (LCA)
  - Measure inputs, outputs and impacts of the product
  - Resource accounting
- Helps avoid shifting environmental impacts from one area to another

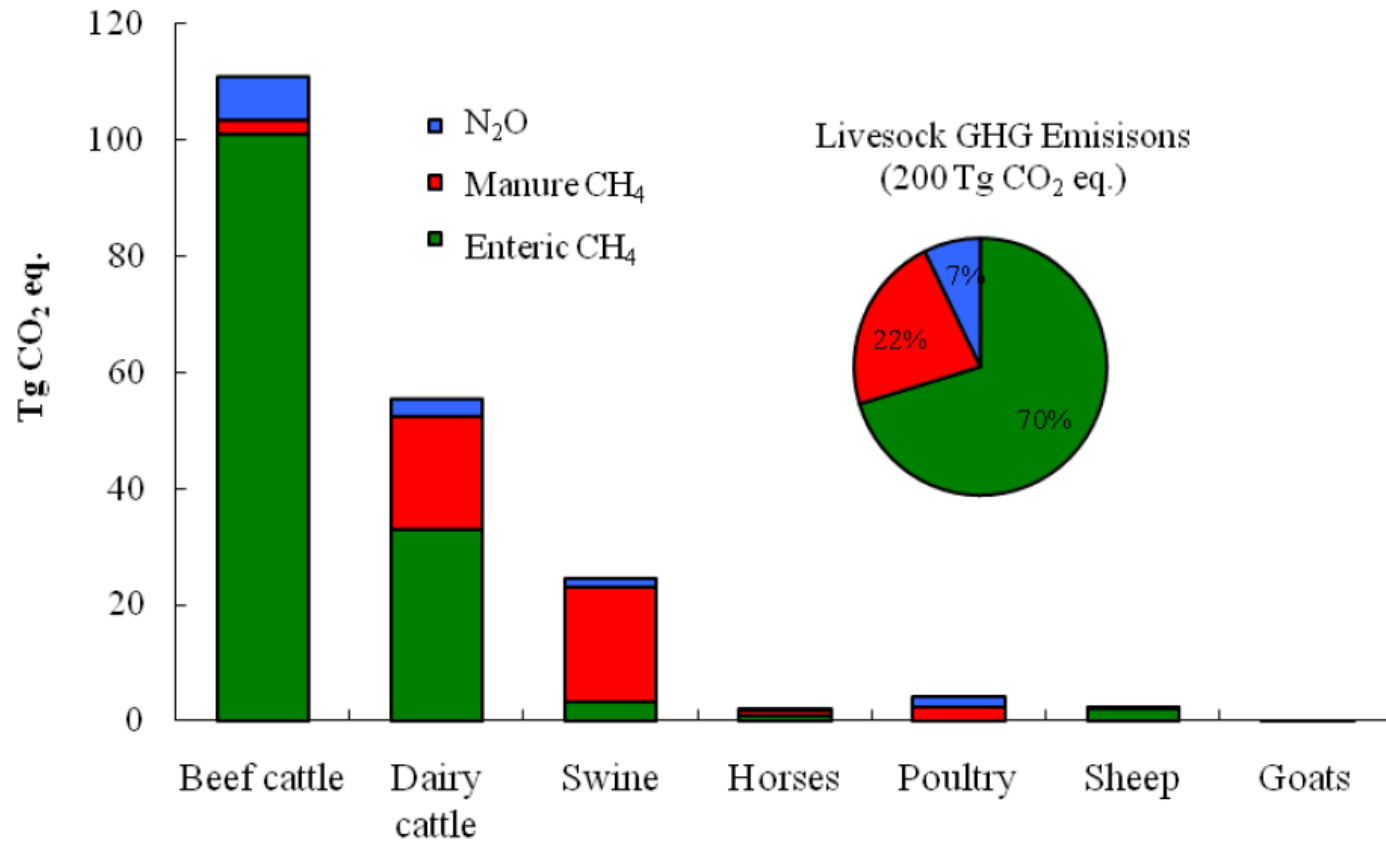
# Carbon foot print of agriculture



# Agricultural emissions by sector



# Emissions by animal group



# Speakers:

- **Dr. Gary Hawkins** - Water Resource Management and Policy Specialist, UGA College of Agricultural and Environmental Sciences
- **Dr. Mark Risse** - Director of Marine Extension and Georgia Sea Grant and Georgia Power Professor of Water Policy at the University of Georgia
- **Dr. Claudia Dunkley** - Extension Poultry Scientist in the department of Poultry Science